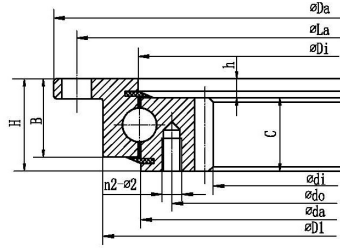


Four point contact ball slewing bearing (with outer flange and internal gear type)



| Выбрать | запрос | Подшипник | | Rothe Erde Model | TG Model | Граничные размеры (мм) | | | | | | | | Bolt hole diameter (mm) | | | | Structure dimensions (mm) | | | | | | Gear Parameters (mm) | | | Basic load rating Coa (kN) | Вес (кг) |
|--------------|---------------------|-----------------|---------------|------------------|----------|------------------------|----|-----|-----|----|----|-----|-----|-------------------------|-----|------|------|---------------------------|------|-------|-------|----|-----|----------------------|------|--------|----------------------------|----------|
| | | Модель | INA Model | | | Да | Д: | ди | ЧАС | Ла | Ли | n1 | n2 | φ1 | φ2 | Д1 | д: | б | час | Б: | С | Ди | да | м | г | дельта | | |
| SLIR15/280 | | | | 340 | | 216 | 39 | 324 | 252 | 20 | 20 | M6 | M6 | 310 | 238 | 30 | 5 | 34 | 34 | 279 | 277 | 4 | 56 | 224 | 300 | 10 | | |
| SLIR20/414Y | VLI200414N ZT | | | 518 | | 325 | 56 | 490 | 375 | 8 | 12 | φ18 | M12 | 458.5 | 350 | 40 | 11.5 | 44.5 | 47.5 | 415.5 | 412.5 | 5 | 67 | 335 | 600 | 28.5 | | |
| SLIR20/414 | VLI 20 0414N ZT RL2 | | | 516 | | 325 | 56 | 490 | 375 | 8 | 12 | φ18 | M12 | 456 | 350 | 40 | 11.5 | 44.5 | 47.5 | 415.5 | 412.5 | 5 | 67 | 335 | 300 | 36.3 | | |
| SLIR20/414 | VLI200414N | | | 518 | | 325 | 56 | 490 | 375 | 8 | 12 | 18 | M12 | | 350 | 40 | 8.5 | 44.5 | 47.5 | 415.5 | 412.5 | 5 | 67 | 335 | 295 | 27.5 | | |
| SLIR20/414 | | 232.20.0400.013 | | 518 | | 326.5 | 56 | 490 | 375 | 8 | 12 | 18 | M12 | | | 45.5 | 10.5 | 45.5 | 45.5 | 415.5 | 412.5 | 5 | 67 | 335 | 250 | 27.1 | | |
| SLIR20/414Y | | 232.20.0400.503 | | 518 | | 326.5 | 56 | 490 | 375 | 16 | 12 | 18 | M12 | | | 45.5 | 10.5 | 45.5 | 45.5 | 415.5 | 412.5 | 5 | 67 | 335 | 250 | 26.9 | | |
| SLIR20/414Y1 | | 232.21.0475.013 | | 517 | | 326.5 | 56 | 490 | 375 | 8 | 12 | 18 | M12 | | | 45.5 | 10.5 | 45.5 | 45.5 | 415.5 | 411 | 5 | 67 | 335 | 250 | 27.1 | | |
| SLIR20/414A | | | 1.505.20.00.C | 518 | | 326.5 | 56 | 490 | 375 | 8 | 12 | φ18 | M12 | 453 | | 46 | 10 | 46 | 46 | 415.5 | 412.5 | 5 | 67 | 335 | 500 | 35.4 | | |
| SLIR20/544Y | VLI200544N ZT | | | 648 | | 444 | 56 | 620 | 505 | 10 | 16 | φ18 | M12 | 588.5 | | 44.5 | 11.5 | 44.5 | 47.5 | 545.5 | 542.5 | 6 | 76 | 456 | 790 | 40.6 | | |
| SLIR20/544Y3 | VLI200544N | | | 648 | | 444 | 56 | 620 | 505 | 10 | 16 | 18 | M12 | | | 44.5 | 11.5 | 44.5 | 47.5 | 545.5 | 542.5 | 6 | 76 | 456 | 385 | 38 | | |
| SLIR20/544Y2 | | 232.20.0500.013 | | 648 | | 445.2 | 56 | 620 | 505 | 10 | 16 | 18 | M12 | | | 45.5 | 10.5 | 45.5 | 45.5 | 545.5 | 542.5 | 6 | 76 | 456 | 330 | 36.9 | | |
| SLIR20/544Y4 | | 232.20.0500.503 | | 648 | | 445.2 | 56 | 620 | 505 | 20 | 16 | 18 | M12 | | | 45.5 | 10.5 | 45.5 | 45.5 | 545.5 | 542.5 | 6 | 76 | 456 | 330 | 36.7 | | |
| SLIR20/544Y1 | | 232.21.0575.013 | | 647 | | 445.2 | 56 | 620 | 505 | 10 | 16 | 18 | M12 | | | 45.5 | 10.5 | 45.5 | 45.5 | 545.5 | 541 | 6 | 76 | 456 | 330 | 36.9 | | |
| SLIR20/544 | | | 1.650.20.00.C | 648 | | 445.2 | 56 | 620 | 505 | 10 | 16 | φ18 | M12 | 583 | | 46 | 10 | 46 | 46 | 545.5 | 542.5 | 6 | 76 | 456 | 700 | 40.2 | | |
| SLIR20/644Y | VLI200644N ZT | | | 748 | | 546 | 56 | 720 | 605 | 12 | 18 | φ18 | M12 | 688.5 | | 44.5 | 11.5 | 44.5 | 47.5 | 645.5 | 642.5 | 6 | 93 | 558 | 900 | 47.4 | | |
| SLIR20/644Y2 | VLI200644N | | | 748 | | 546 | 56 | 720 | 605 | 12 | 18 | 18 | M12 | | | 44.5 | 8.5 | 44.5 | 47.5 | 645.5 | 642.5 | 6 | 93 | 558 | 455 | 45 | | |
| SLIR20/644Y3 | | 232.20.0600.013 | | 748 | | 547.2 | 56 | 720 | 605 | 12 | 18 | 18 | M12 | | | 45.5 | 10.5 | 45.5 | 45.5 | 645.5 | 642.5 | 6 | 93 | 558 | 390 | 43.7 | | |
| SLIR20/644Y4 | | 232.20.0600.503 | | 748 | | 547.2 | 56 | 720 | 605 | 24 | 18 | 18 | M12 | | | 45.5 | 10.5 | 45.5 | 45.5 | 645.5 | 642.5 | 6 | 93 | 558 | 390 | 43.4 | | |
| SLIR20/644Y1 | | 232.21.0675.013 | | 747 | | 547.2 | 56 | 720 | 605 | 12 | 18 | 18 | M12 | | | 45.5 | 10.5 | 45.5 | 45.5 | 645.5 | 641 | 6 | 93 | 558 | 390 | 43.7 | | |
| SLIR20/644 | | | 1.750.20.00.C | 748 | | 547.2 | 56 | 720 | 605 | 12 | 18 | φ18 | M12 | 683 | | 46 | 10 | 46 | 46 | 645.5 | 642.5 | 6 | 93 | 558 | 780 | 53.3 | | |
| SLIR20/744Y | VLI200744N ZT | | | 848 | | 648 | 56 | 820 | 705 | 12 | 20 | φ18 | M12 | 788.5 | | 44.5 | 11.5 | 44.5 | 47.5 | 745.5 | 742.5 | 6 | 110 | 660 | 530 | 54 | | |
| SLIR20/744Y3 | VLI200744N | | | 848 | | 648 | 56 | 820 | 705 | 12 | 20 | 18 | M12 | | | 44.5 | 8.5 | 44.5 | 47.5 | 745.5 | 742.5 | 6 | 110 | 660 | 530 | 51.5 | | |
| SLIR20/744Y2 | | 232.20.0700.013 | | 848 | | 649.2 | 56 | 820 | 705 | 12 | 20 | 18 | M12 | | | 45.5 | 10.5 | 45.5 | 45.5 | 745.5 | 742.5 | 6 | 110 | 660 | 450 | 51.1 | | |
| SLIR20/744Y4 | | 232.20.0700.503 | | 848 | | 649.2 | 56 | 820 | 705 | 24 | 20 | 18 | M12 | | | 45.5 | 10.5 | 45.5 | 45.5 | 745.5 | 742.5 | 6 | 110 | 660 | 450 | 50.8 | | |
| SLIR20/744Y1 | | 232.21.0775.013 | | 847 | | 649.2 | 56 | 820 | 705 | 12 | 20 | 18 | M12 | | | 45.5 | 10.5 | 45.5 | 45.5 | 745.5 | 741 | 6 | 110 | 660 | 450 | 51.1 | | |
| SLIR20/744 | | | 1.850.20.00.C | 848 | | 649.2 | 56 | 820 | 705 | 12 | 20 | φ18 | M12 | 783 | | 46 | 10 | 46 | 46 | 745.5 | 742.5 | 6 | 110 | 660 | 910 | 63.1 | | |
| SLIR20/844Y | VLI200844N ZT | | | 948 | | 736 | 56 | 920 | 805 | 14 | 20 | φ18 | M12 | 888.5 | | 44.5 | 11.5 | 44.5 | 47.5 | 845.5 | 842.5 | 8 | 94 | 752 | 1200 | 65.2 | | |
| SLIR20/844Y2 | VLI200844N | | | 948 | | 736 | 56 | 920 | 805 | 14 | 20 | 18 | M12 | | | 44.5 | 8.5 | 44.5 | 47.5 | 845.5 | 842.5 | 8 | 94 | 752 | 600 | 61.5 | | |
| SLIR20/844Y3 | | 232.20.0800.013 | | 948 | | 737.6 | 56 | 920 | 805 | 14 | 20 | 18 | M12 | | | 45.5 | 10.5 | 45.5 | 45.5 | 845.5 | 842.5 | 8 | 94 | 752 | 510 | 61.6 | | |
| SLIR20/844Y4 | | 232.20.0800.503 | | 948 | | 737.6 | 56 | 920 | 805 | 28 | 20 | 18 | M12 | | | 45.5 | 10.5 | 45.5 | 45.5 | 845.5 | 842.5 | 8 | 94 | 752 | 510 | 61.3 | | |