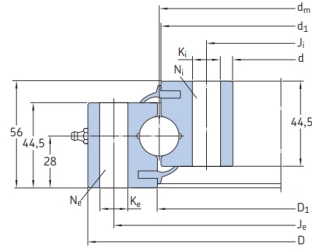


Medium size four-point contact ball slewing bearings without a gear



Выбрать	запрос	Обозначение	De(mm)	Dm(mm)	Di(mm)	Fe(mm)	he(mm)	Ne(mm)	Fi(mm)	hi(mm)	Ni(mm)	Вес (кг)	axial dyn. C(KN)	axial stat. Co(KN)	Fig N°	raceways (r)	bolt (b)
RKS.060.20.0414	486	414	342	460	14	24	368	14	24	29	169	560	E	1r	1b		
RKS.060.20.0544	616	544	472	590	14	32	498	14	32	37	188	740	E	2r	2b		
RKS.060.20.0644	716	644	572	690	14	36	598	14	36	44	200	880	E	3r	3b		
RKS.060.20.0744	816	744	672	790	14	40	698	14	40	52	211	1010	E	4r	4b		
RKS.060.20.0844	916	844	772	890	14	40	798	14	40	60	222	1150	E	5r	5b		
RKS.060.20.0944	1016	944	872	990	14	44	898	14	44	67	231	1280	E	6r	6b		
RKS.060.20.1094	1166	1094	1022	1140	14	48	1048	14	48	77	244	1490	E	7r	7b		
RKS.060.25.1204	1289	1204	1119	1257	16	45	1151	16	45	121	371	1943	F	8r	8b		
RKS.060.25.1314	1399	1314	1229	1367	16	50	1261	16	50	132	383	2124	F	9r	9b		
RKS.060.25.1424	1509	1424	1339	1477	16	54	1371	16	54	143	395	2304	F	10r	10b		
RKS.060.25.1534	1619	1534	1449	1587	16	60	1481	16	60	154	406	2485	F	11r	11b		
RKS.060.25.1644	1752	1644	1536	1708	22	54	1580	22	54	209	416	2666	F	12r	12b		
RKS.060.25.1754	1862	1754	1646	1818	22	60	1690	22	60	222	424	2847	F	13r	13b		
RKS.060.30.1904	2012	1904	1796	1968	22	64	1840	22	64	241	571	4048	F	14r	14b		