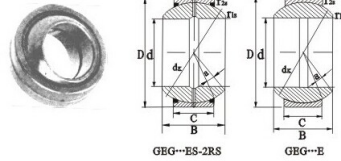
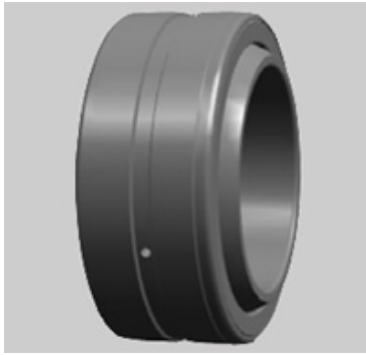


# GEG...(E)ES spherical plain bearing



| Выбрать  | запрос       | Обозначение |       | Размеры (мм) |    |      |    |     |       |         |         | Номинальная нагрузка (кН) |    | Вес (кг) |
|----------|--------------|-------------|-------|--------------|----|------|----|-----|-------|---------|---------|---------------------------|----|----------|
|          |              | Type1       | Type2 | д:           | Д: | Б:   | С  | dk  | a · ≈ | r2s min | r2s min | С                         | CO |          |
| GEG6E    | -            | 6           | 16    | 9            | 5  | 13   | 21 | 0.3 | 0.3   | 5.5     | 27.5    | 0.008                     |    |          |
| GEG8E    | -            | 8           | 19    | 11           | 6  | 16   | 21 | 0.3 | 0.3   | 8.15    | 40.5    | 0.014                     |    |          |
| GEG10E   | -            | 10          | 22    | 12           | 7  | 18   | 18 | 0.3 | 0.3   | 10.8    | 54      | 0.02                      |    |          |
| GEG12E   | -            | 12          | 26    | 15           | 9  | 22   | 18 | 0.3 | 0.3   | 17      | 85      | 0.034                     |    |          |
| GEG15E   | -            | 15          | 30    | 16           | 10 | 25   | 16 | 0.3 | 0.3   | 21.2    | 106     | 0.046                     |    |          |
| GEG17E   | -            | 17          | 35    | 20           | 12 | 29   | 19 | 0.3 | 0.3   | 30      | 146     | 0.078                     |    |          |
| GEG20ES  | GEG20ES-2RS  | 20          | 42    | 25           | 16 | 35.5 | 17 | 0.6 | 0.6   | 48      | 240     | 0.15                      |    |          |
| GEG25ES  | GEG25ES-2RS  | 25          | 47    | 28           | 18 | 40.7 | 17 | 0.6 | 0.6   | 12      | 310     | 0.19                      |    |          |
| GEG30ES  | GEG30ES-2RS  | 30          | 55    | 32           | 20 | 47   | 17 | 0.6 | 1     | 80      | 400     | 0.29                      |    |          |
| GEG35ES  | GEG35ES-2RS  | 35          | 62    | 35           | 23 | 53   | 16 | 0.6 | 1     | 100     | 500     | 0.39                      |    |          |
| GEG40ES  | GEG40ES-2RS  | 40          | 68    | 40           | 25 | 60   | 17 | 0.6 | 1     | 127     | 640     | 0.52                      |    |          |
| GEG45ES  | GEG45ES-2RS  | 45          | 75    | 43           | 28 | 66   | 15 | 0.6 | 1     | 156     | 780     | 0.68                      |    |          |
| GEG50ES  | GEG50ES-2RS  | 50          | 90    | 56           | 36 | 80   | 17 | 0.6 | 1     | 245     | 1220    | 1.4                       |    |          |
| GEG60ES  | GEG60ES-2RS  | 60          | 105   | 63           | 40 | 92   | 17 | 1   | 1     | 315     | 1560    | 2                         |    |          |
| GEG70ES  | GEG70ES-2RS  | 70          | 120   | 70           | 45 | 105  | 16 | 1   | 1     | 400     | 2000    | 2.9                       |    |          |
| GEG80ES  | GEG80ES-2RS  | 80          | 130   | 75           | 50 | 115  | 14 | 1   | 1     | 490     | 2450    | 3.5                       |    |          |
| GEG90ES  | GEG90ES-2RS  | 90          | 150   | 85           | 55 | 130  | 15 | 1   | 1     | 610     | 3050    | 5.4                       |    |          |
| GEG100ES | GEG100ES-2RS | 100         | 160   | 85           | 55 | 140  | 14 | 1   | 1     | 655     | 3250    | 5.9                       |    |          |