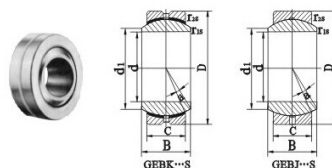
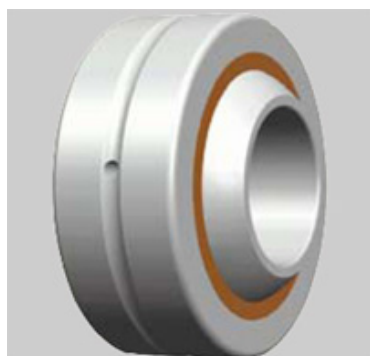


GEBK...S spherical plain bearing



Выбрать <input type="checkbox"/> запрос <input type="checkbox"/> Обозначение			Размеры (мм)							Номинальная нагрузка (кН) ^a		Вес ≈ (кг)
д:	Д:	Б:	С	d1 min	r1s min	r2s min	С	С0				
GEBK5S	5	16	8	6	7.7	0.3	0.3	3.3	7.8	13	0.009	
GEBK6S	6	18	9	6.75	9	0.3	0.3	4.3	9.8	13	0.013	
GEBK8S	8	22	12	9	10.4	0.3	0.3	6.8	16	14	0.024	
GEBK10S	10	26	14	10.5	12.9	0.3	0.6	10	23	14	0.039	
GEBK12S	12	30	16	12	15.4	0.3	0.6	13	31	13	0.058	
GEBK14S	14	34	19	13.5	16.9	0.3	0.6	17	40	16	0.084	
GEBK16S	16	38	21	15	19.4	0.3	0.6	21	50	15	0.111	
GEBK18S	18	42	23	16.5	21.9	0.3	0.6	26	61	15	0.16	
GEBK20S	20	46	25	18	24.4	0.3	0.6	31	73	15	0.21	
GEBK22S	22	50	28	20	25.8	0.3	0.6	38	88	15	0.26	
GEBK25S	25	56	31	22	29.6	0.6	0.6	47	110	15	0.39	
GEBK30S	30	66	37	25	34.8	0.6	0.6	63	148	17	0.61	
GEBJ5S	5	13	8	6	7.7	0.3	0.3	3.2	9	13	0.007	
GEBJ6S	6	16	9	6.75	9	0.3	0.3	4.1	12	13	0.01	
GEBJ8S	8	19	12	9	10.4	0.3	0.3	6.5	20	13	0.016	
GEBJ10S	10	22	14	10.5	12.9	0.3	0.6	9.6	28	13	0.031	
GEBJ12S	12	26	16	12	15.4	0.3	0.6	12	37	13	0.055	
GEBJ14S	14	28	19	13.5	16.9	0.3	0.6	16	49	15	0.078	
GEBJ16S	16	32	21	15	19.4	0.3	0.6	20	61	15	0.095	
GEBJ18S	18	35	23	16.5	21.9	0.3	0.6	25	74	15	0.14	
GEBJ20S	20	40	25	18	24.4	0.3	0.6	30	89	15	0.18	

GEBK...S spherical plain bearing

GEBJ22S	22	42	28	20	25.8	0.3	0.6	36	108	15	0.21
GEBJ25S	25	47	31	22	29.6	0.6	0.6	45	130	15	0.35
GEBJ30S	30	55	37	25	34.8	0.6	0.6	61	178	15	0.56