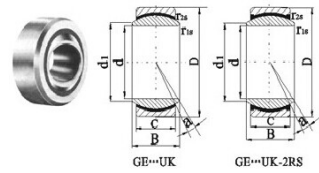
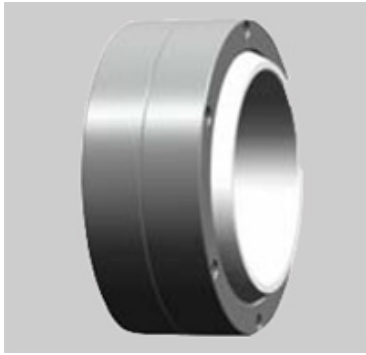


GE...UK spherical plain bearing



Выбрать	запрос	Обозначение	Размеры (мм)							Номинальная нагрузка (кН)		a · Вес ≈ (кг)
			д:	Д:	Б:	С	d1 min	r1s min	r2s min	С	С0	
GE4UK	4	12	5	3	6	0.3	0.3	2.1	5.4	16	0.003	
GE5UK	5	14	6	4	8	0.3	0.3	3.6	9.1	13	0.005	
GE6UK	6	14	6	4	8	0.3	0.3	3.6	9.1	13	0.004	
GE8UK	8	16	8	5	10	0.3	0.3	5.8	14	15	0.008	
GE10UK	10	19	9	6	13	0.3	0.3	8.6	21	12	0.011	
GE12UK	12	22	10	7	15	0.3	0.3	11	28	10	0.015	
GE15UK	15	26	12	9	18	0.3	0.3	18	45	8	0.027	
GE17UK-2RS	17	30	14	10	20	0.3	0.3	22	56	10	0.041	
GE20UK-2RS	20	35	16	12	24	0.3	0.3	31	78	9	0.066	
GE25UK-2RS	25	42	20	16	29	0.6	0.6	51	127	7	0.119	
GE30UK-2RS	30	47	22	18	34	0.6	0.6	65	166	6	0.163	
GE35UK-2RS	35	55	25	20	39	0.6	1	112	224	6	0.233	
GE40UK-2RS	40	62	28	22	45	0.6	1	140	280	7	0.306	
GE45UK-2RS	45	68	32	25	50	0.6	1	180	360	7	0.427	
GE50UK-2RS	50	75	35	28	55	0.6	1	220	440	6	0.546	
GE60UK-2RS	60	90	44	36	66	1	1	345	695	6	1.04	
GE70UK-2RS	70	105	49	40	77	1	1	440	880	6	1.55	
GE80UK-2RS	80	120	55	45	88	1	1	567	1140	6	2.31	
GE90UK-2RS	90	130	60	50	98	1	1	690	1370	5	2.75	
GE100UK-2RS	100	150	70	55	109	1	1	858	1730	7	4.45	
GE110UK-2RS	110	160	70	55	120	1	1	924	1860	6	4.82	

GE...UK spherical plain bearing

GE120UK-2RS	120	180	85	70	130	1	1	1340	2700	6	8.05
-------------	-----	-----	----	----	-----	---	---	------	------	---	------