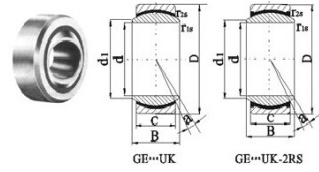
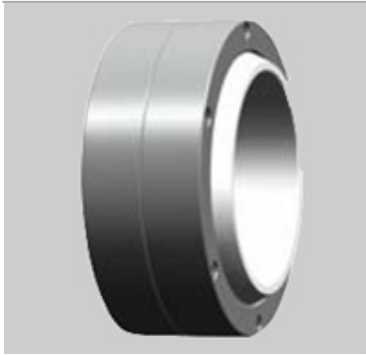


GE...UK spherical plain bearing



Выбрать	запрос	Обозначение	Размеры (мм)							Номинальная нагрузка (кН)		a	Вес (кг)
			д:	Д:	Б:	С	d1 min	r1s min	r2s min	С	CO		
GE4UK	4	12	5	3	6	0.3	0.3	2.1	5.4	16	0.003		
GE5UK	5	14	6	4	8	0.3	0.3	3.6	9.1	13	0.005		
GE6UK	6	14	6	4	8	0.3	0.3	3.6	9.1	13	0.004		
GE8UK	8	16	8	5	10	0.3	0.3	5.8	14	15	0.008		
GE10UK	10	19	9	6	13	0.3	0.3	8.6	21	12	0.011		
GE12UK	12	22	10	7	15	0.3	0.3	11	28	10	0.015		
GE15UK	15	26	12	9	18	0.3	0.3	18	45	8	0.027		
GE17UK-2RS	17	30	14	10	20	0.3	0.3	22	56	10	0.041		
GE20UK-2RS	20	35	16	12	24	0.3	0.3	31	78	9	0.066		
GE25UK-2RS	25	42	20	16	29	0.6	0.6	51	127	7	0.119		
GE30UK-2RS	30	47	22	18	34	0.6	0.6	65	166	6	0.163		
GE35UK-2RS	35	55	25	20	39	0.6	1	112	224	6	0.233		
GE40UK-2RS	40	62	28	22	45	0.6	1	140	280	7	0.306		
GE45UK-2RS	45	68	32	25	50	0.6	1	180	360	7	0.427		
GE50UK-2RS	50	75	35	28	55	0.6	1	220	440	6	0.546		
GE60UK-2RS	60	90	44	36	66	1	1	345	695	6	1.04		
GE70UK-2RS	70	105	49	40	77	1	1	440	880	6	1.55		
GE80UK-2RS	80	120	55	45	88	1	1	567	1140	6	2.31		
GE90UK-2RS	90	130	60	50	98	1	1	690	1370	5	2.75		
GE100UK-2RS	100	150	70	55	109	1	1	858	1730	7	4.45		
GE110UK-2RS	110	160	70	55	120	1	1	924	1860	6	4.82		
GE120UK-2RS	120	180	85	70	130	1	1	1340	2700	6	8.05		